

## the true alternative in medical cannabis.

Just a few reasons why **ioVia™ Cannabis Infused Creams** are the true alternative to smoking and eating cannabis:

- ✓ Precise Dosing
- ✓ Consistent Experience
- ✓ Fast-Acting
- ✓ Long Lasting
- ✓ Mild Psychoactivity
- ✓ Safe for Everyday Use
- ✓ Discreet
- ✓ Local & Systemic Use
- ✓ Calorie-Free
- ✓ Optimized Blends

Ask your Patient Relations Specialist for details about how **ioVia™ Cannabis Infused Creams** compare to other methods of medical cannabis use.

## the perfect blends of **CBD** & **THC**.

### HI-CBD BLEND

double strength



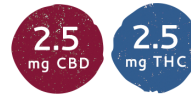
PER PUMP



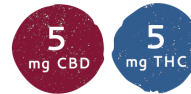
PER PUMP

### CBD-THC BLEND

double strength



PER PUMP



PER PUMP

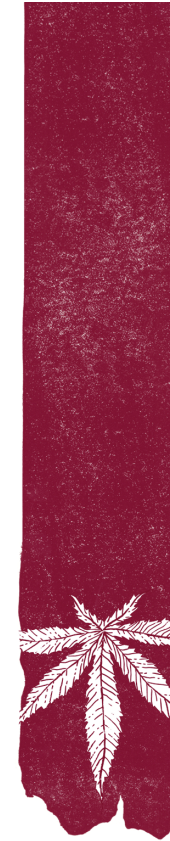
### HI-THC BLEND



PER PUMP

**ioVia™** products are offered in several distinct combinations ("blends") of cannabinoids carefully chosen to fit a broad spectrum of ailments suitable for cannabis therapy.

*smoke-free,  
calorie-free,  
precise,  
discreet,  
effective.*



**ioVia™**

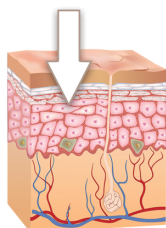
**TRUE TRANSDERMAL  
cannabis infused creams**

**The innovative alternative  
in medicinal cannabis.**

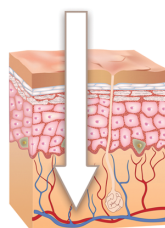
## the difference is true transdermals.

**ioVia™ Cannabis Infused Creams** are an excellent alternative to the traditional methods of cannabis use. While smoking and ingesting cannabinoids can be effective, it can be difficult to control the consistency and accuracy of dosing. **ioVia™ Cannabis Infused Creams** are a convenient and safe way to use cannabis with a controlled and precise methodology.

Most topical products currently on the market address only the top layer of the skin. **ioVia's™** scientifically-proven True Transdermal system delivers cannabinoids (such as CBD & THC) safely and effectively through the skin.



TOPICAL CREAMS



TRUE TRANSDERMAL  
ioVia™ creams

The difference with True Transdermals is clear – simple, consistent, accurate dosage that you won't find with any other approach to medical cannabis.

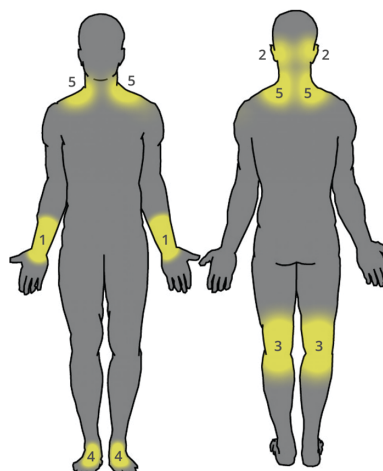
## great for both local and systemic use.

### LOCAL USE

Put it where it hurts. **ioVia™ Cannabis Infused Creams** can be applied directly to skin of the affected area, delivering cannabinoids right where they're needed.

### SYSTEMIC USE

Some ailments require a longer term regimen to continuously build the level of cannabinoids in your body. **ioVia™** users can receive cumulative benefits by applying the cream to the recommended systemic application sites below.



## get the most from your ioVia creams.

### INSTRUCTIONS FOR USAGE

- Apply only to clean, dry skin.
- Start with one pump per application. If needed, increase to two pumps on subsequent applications.
- Rub cream fully into skin, allowing 10–15 minutes for full absorption.
- Wash hands thoroughly after application.
- For continued systemic use, rotate through different application sites regularly (recommended sites are numbered in the diagram at left).
- For external use only. Avoid contact with eyes, mucous membranes, and broken skin.
- Avoid skin-to-skin contact with others until cream is fully absorbed.
- If you have any medical conditions, consult your physician before using this product.
- Side effects may include happiness and/or increased sense of well-being.